

VILLE SULL'ARCIPELAGO

villas for sale with
sea view

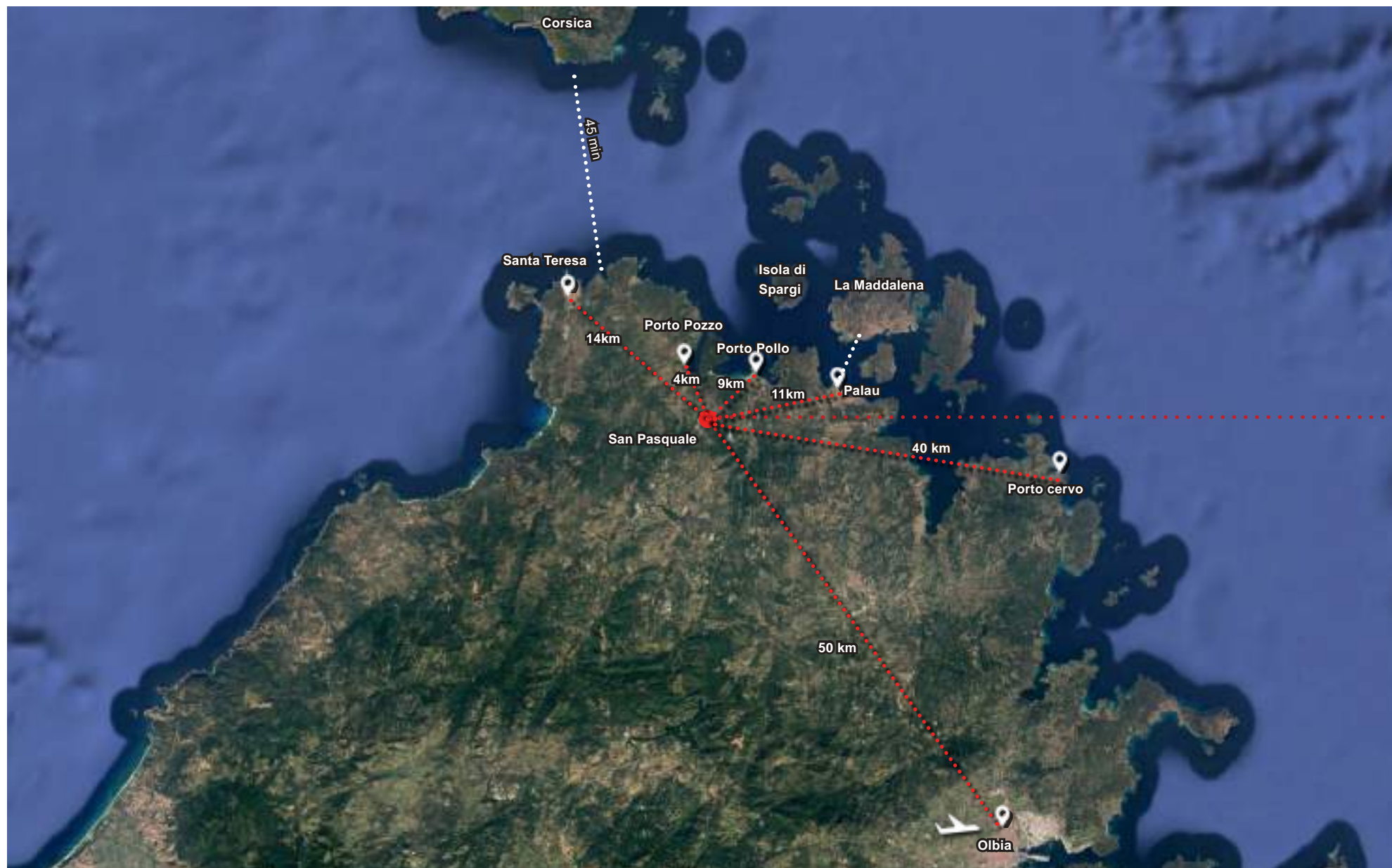


CONTENTS

- 1 Sardinia, Gallura
- 2 The area
- 3 Your home

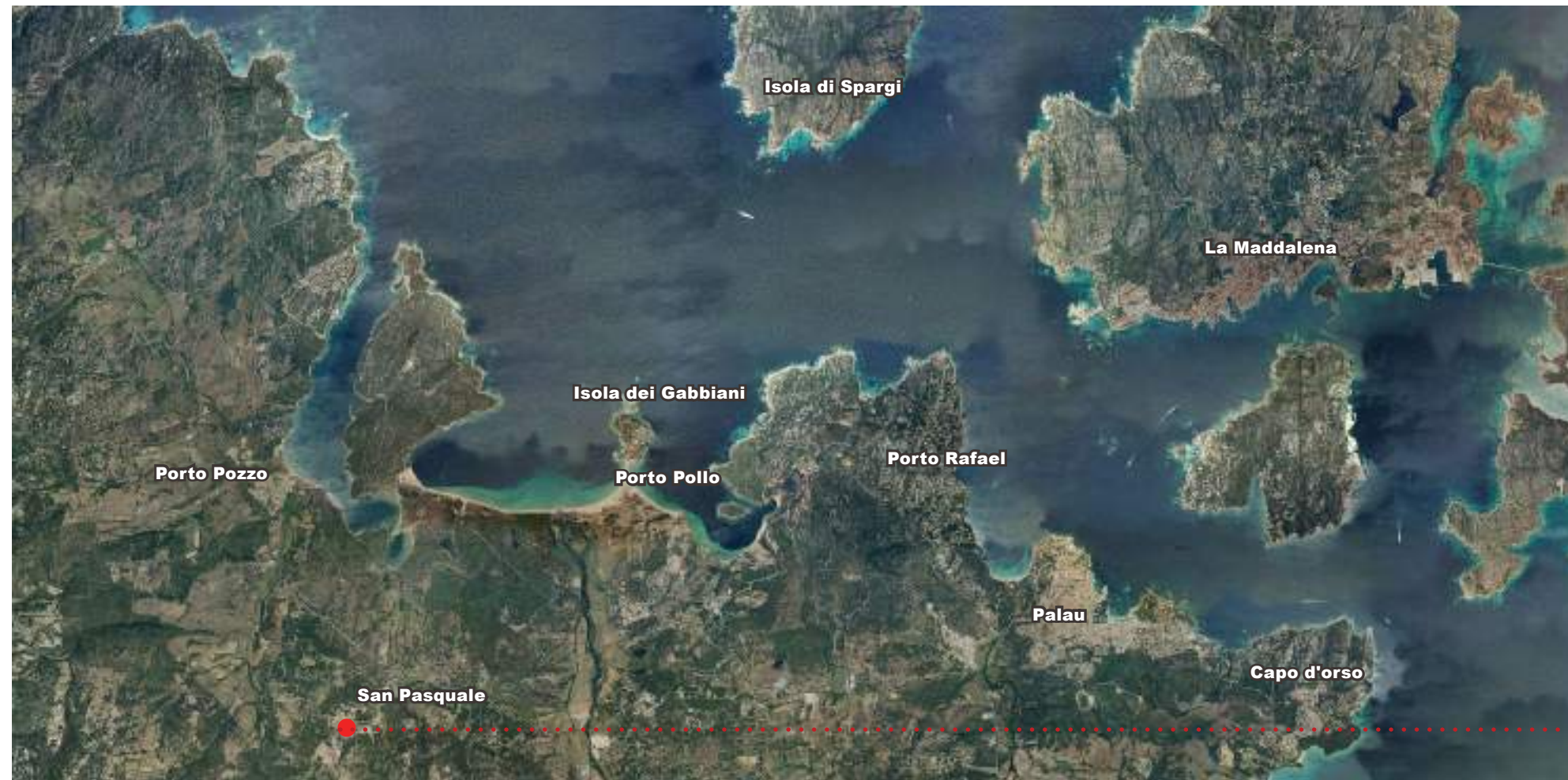
WHERE WE ARE





Il Piano di Lottizzazione “Liccia di Fora”

- Olbia Airport: **50 km**
- Porto Cervo / Costa Smeralda: **40 km**
- Santa Teresa: **14 km**
- Palau / Maddalena embarkation: **11 km**
- Porto Rafael: **10 km**
- Porto Pollo / Isola dei Gabbiani: **9 km**
- Porto pozzo: **4 km**



“Liccìa di Fora”

SARDINIA, GALLURA

Gallura is that hilly-mountainous area in the north-east of Sardinia that shows itself in all its peculiar characteristics, different from the rest of the island, thanks to its characteristic **granite landscapes** and vivid colour contrasts.

Magical, relaxing and soothing places where one can close one's eyes, smell the perfume and listen to the sound of the sea to come into deep contact with a land to be known with all five senses.



THE AREA

The 'Liccia di Fora' Allotment Plan

The area is located adjacent to San Pasquale in the municipality of Santa Teresa Gallura, from which it runs northwards along a slope that descends to the sea, to the beach of Porto Liscia.

The Liccia di Fora lotization plan is located in a **strategic position**, close to the most popular areas of northern Sardinia.

We are also very close to the **port of Porto pozzo**, which has **390 berths**, and the port of **Palau** with a capacity of **475 berths**.

Both have **boat and dinghy rental** services, an excellent solution for discovering the crystal-clear coves of the Maddalena archipelago, many of which are impossible to visit by land.





The view of the islands

The lot enjoys a **breathtaking view** of the islands of Spargi, Spargiotto, Budelli, Razzoli, Santa Maria and La Maddalena.

The nearby beach of Porto Liscia, which takes its name from the river that flows into its waters, is the largest among those in the municipality of Santa Teresa Gallura. It is enclosed



between the Coluccia peninsula and Isuledda, stretches for more than 8 km of **golden sand** of granite nature and is washed by a crystal-clear **sea** with a **shallow sandy seabed**.

It is an internationally renowned destination for **windsurfers**.



Close to the beach is the Sciumara pond, which, together with the mouth of the Liscia river, is home to birdlife of great **natural interest**.

The beach offers several bars and refreshment points, in a context of very high environmental quality.



YOUR HOME



Between sea and granite

The various residential units have been carefully designed with total respect for the context and the environment.

Immersed in the Mediterranean vegetation and thanks to the sloping terrain, each plot will enjoy **total privacy and views towards the islands**, so you will feel as if you are alone in the entire valley.

Each dwelling will have its own **private garden**.

Three-room house:

INTERIOR

- 1_living room mq 29.38
- 2_bathroom mq 1.1 + 1.1
- 3_main bedroom mq 14.39
- 4_second bedroom mq 9.75
- 5_bathroom mq 3.65
- 6_disengagement mq 1.2

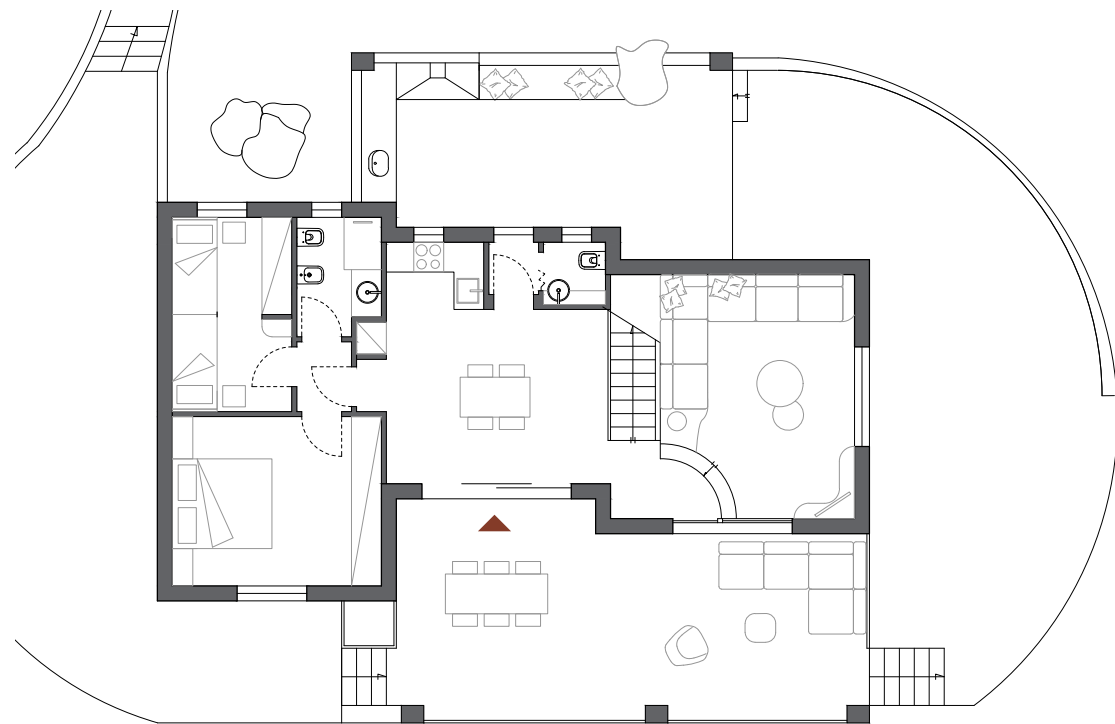
EXTERIOR

- 7_panoramic terrace mq 35
- 8_BBQ area mq 24



Independent villa





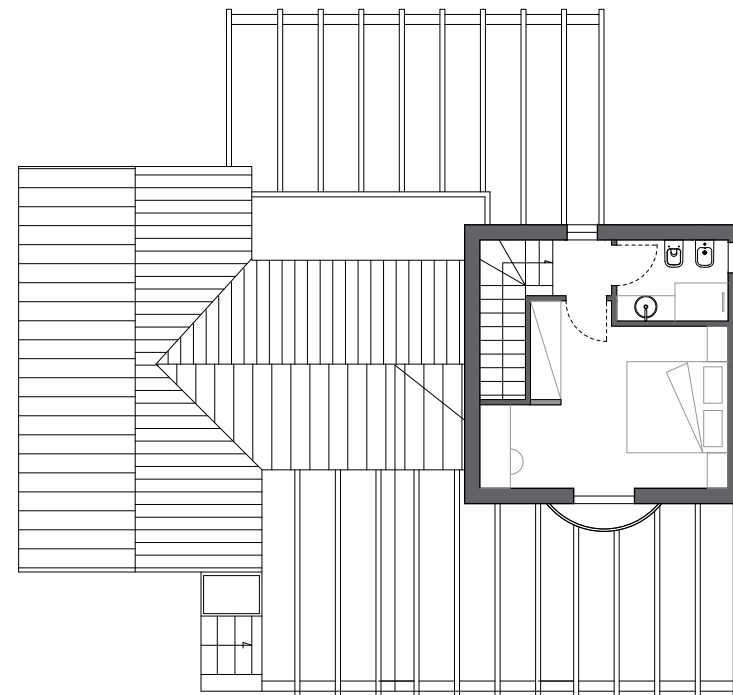
ground floor

four-room house

interiors mq 95

terraces mq 38

Independent villa



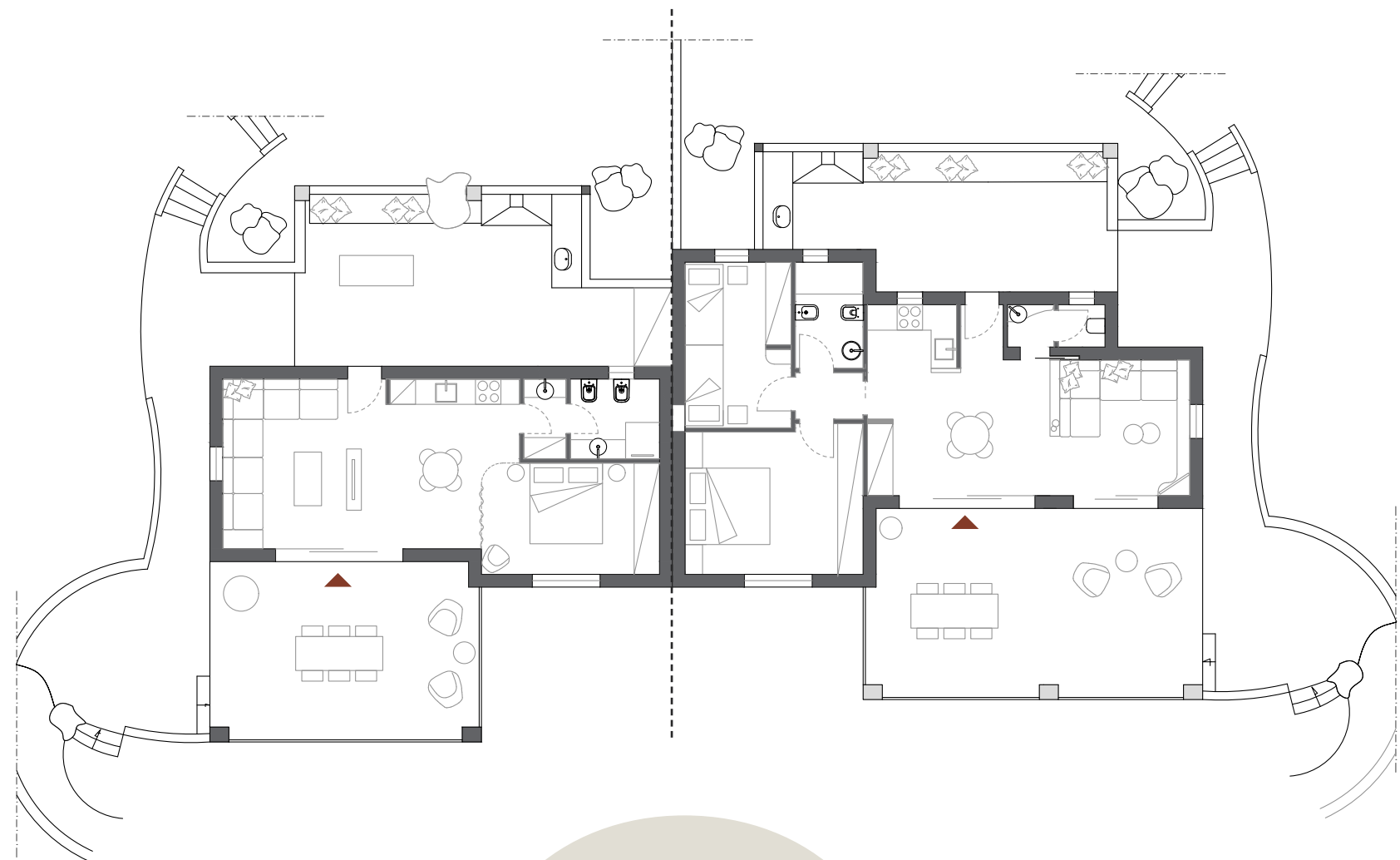
first floor

four-room house

interiors mq 95

terraces mq 38

Independent villa



one-room: interiors mq 53
terraces mq 26

three-room: interiors mq 60
terraces mq 35

**semi-detached
house**



INTERIORS



22



23





GUEST BATHROOM



MAIN BEDROOM



30



31



MAIN BATHROOM



34



35

SMALL BEDROOM





EXTERIOR





VILLE SULL'ARCIPELAGO

📍 San Pasquale

CONTACTS

Karedil srl

mail:

karedil@libero.it

robertofaiferri@hotmail.com

phone:

+39 3355287080